



$\text{Doe}\tilde{\text{N}}\langle\text{D}\rangle\text{D}^{3/4}\tilde{\text{N}}\in\tilde{\text{N}}f\tilde{\text{N}}\ddagger\text{D}^{1/2}\text{D}^{3/4}\text{D}^1\tilde{\text{N}}\in\text{D}^\circ\text{D}\pm\text{D}^{3/4}\tilde{\text{N}},\tilde{\text{N}}\langle\text{D}^2$
 $\text{D}\cdot\text{D}\text{D}^1\text{D}^{1/2}\text{D}\mu\text{D}^{1/4}$
 $\text{D}\cdot\text{D}^{3/4}\text{D}^2\text{D}^{3/4}\tilde{\text{N}}\in\text{D}^{3/4}\text{D}'\text{D}\mu, \text{D}^\circ\tilde{\text{N}}f\text{D}\zeta\text{D},\tilde{\text{N}},\tilde{\text{N}}\in$
 $\tilde{\text{N}}\text{D}^{3/4}\text{D}^2\text{D}^\circ\tilde{\text{N}}\in\tilde{\text{N}}\langle$
 $\text{D}'\text{D}\rangle\tilde{\text{N}}\cdot\text{D}^{1/4}\tilde{\text{N}}\langle\text{D}\rangle\text{D}^{3/4}\text{D}^2\text{D}^\circ\tilde{\text{N}}\in\text{D}\mu\text{D}^{1/2}\text{D},\tilde{\text{N}}\cdot$

$\text{Doe}\tilde{\text{N}}\langle\text{D}\rangle\text{D}^{3/4}\text{D}^2\text{D}^\circ\tilde{\text{N}}\in\text{D}^{1/2}\text{D}^{1/2}.\tilde{\text{N}}\in\tilde{\text{N}},,$

DiD~DoeD'DzD) 2024 D'D D•DšDžD•



D“D»D, N, N, DμN€ D D°D'NfD¶D^{1/2}N'«D¹ D'DμD»N'«D¹ 20 D³N€. 130D NfD±

DoeD°N•N•D° 20 D³N€D°D^{1/4}D^{1/4} [\[DŸD^{3/4}D'N€D^{3/4}D±D^{1/2}DμDμ...\]](#)



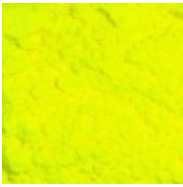
DšN€D°N•D, N, DμD»N€ DζD, D³D^{1/4}DμD^{1/2}N', D^{1/2}N'«D¹
 D'N€D°D^{3/4}-D-DμD»DμD^{1/2}N'«D¹ 50 D³N€. (DcNfN€N†D, N•) 230D NfD±

DoeD°N•N•D° 50 D³N€D°D^{1/4}D^{1/4} [\[DŸD^{3/4}D'N€D^{3/4}D±D^{1/2}DμDμ...\]](#)



DžN, D'NfN~D°D° DıD»D°D'D°D, D¹ D^{1/4}D°D^{1/2}D'D°N€D, D^{1/2} 50 D^{1/4}D» 370D NfD±

DžD±NšDμD^{1/4} 50 D^{1/4}D» [\[DŸD^{3/4}D'N€D^{3/4}D±D^{1/2}DμDμ...\]](#)



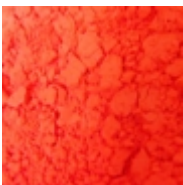
**ĐŸĐ, Đ³Đ¼ĐμĐ½Ñ, Đ½ĐμĐ³¼Đ½Đ³¼Đ²Ñ, Đ¹ Đ—ĐμĐ»Ñ,Ñ,Ñ,Đ¹ 50 Đ³Ñ€
260Đ ÑfĐ±**

Đ—Đ,Đ¹Đ°Đ°Ñ• Đ¹Đ,Ñ•Đ¿ĐμÑ€Ñ•Đ,Ñ• [\[ĐŸĐ³¼Đ¹Ñ€Đ³¼Đ±Đ½ĐμĐμ...\]](#)



**ĐŸĐ, Đ³Đ¼ĐμĐ½Ñ, Đ½ĐμĐ³¼Đ½Đ³¼Đ²Ñ, Đ¹ Đ—ĐμĐ»ĐμĐ½Ñ,Đ¹ 50 Đ³Ñ€
280Đ ÑfĐ±**

[\[ĐŸĐ³¼Đ¹Ñ€Đ³¼Đ±Đ½ĐμĐμ...\]](#)



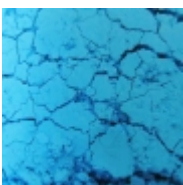
**ĐŸĐ, Đ³Đ¼ĐμĐ½Ñ, Đ½ĐμĐ³¼Đ½Đ³¼Đ²Ñ, Đ¹ ĐšÑ€Đ°Ñ•Đ½Ñ,Đ¹ 50 Đ³Ñ€.
260Đ ÑfĐ±**

Đ—Đ,Đ¹Đ°Đ°Ñ• Đ¹Đ,Ñ•Đ¿ĐμÑ€Ñ•Đ,Ñ• [\[ĐŸĐ³¼Đ¹Ñ€Đ³¼Đ±Đ½ĐμĐμ...\]](#)



**ĐŸĐ, Đ³Đ¼ĐμĐ½Ñ, Đ½ĐμĐ³¼Đ½Đ³¼Đ²Ñ, Đ¹ Đ Đ³¼Đ•Đ³¼Đ²Ñ,Đ¹ 50 Đ³Ñ€
280Đ ÑfĐ±**

Đ—Đ,Đ¹Đ°Đ°Ñ• Đ¹Đ,Ñ•Đ¿ĐμÑ€Ñ•Đ,Ñ• [\[ĐŸĐ³¼Đ¹Ñ€Đ³¼Đ±Đ½ĐμĐμ...\]](#)



**ĐŸĐ, Đ³Đ¼ĐμĐ½Ñ, Đ½ĐμĐ³¼Đ½Đ³¼Đ²Ñ, Đ¹ ĐjĐ,Đ½Đ,Đ¹ 50 Đ³Ñ€.
280Đ ÑfĐ±**

[\[ĐŸĐ³¼Đ¹Ñ€Đ³¼Đ±Đ½ĐμĐμ...\]](#)



**ĐŸĐ,Đ³Đ¼ĐμĐ½Ñ, Đ½ĐμĐ³¼Đ½Đ³¼Đ²Ñ,Đ¹ ĐœĐ,Đ³¼Đ»ĐμÑ,Đ³¼Đ²Ñ,Đ¹ 50 Đ³Ñ€
280Đ ÑfĐ±**

Đ-Đ,Đ¹Đ°Đ°Ñ• Đ´Đ,Ñ•Đ¿ĐμÑ€Ñ•Đ,Ñ• [\[ĐŸĐ³¼Đ´Ñ€Đ³¼Đ±Đ½ĐμĐμ...\]](#)



**ĐŸĐ,Đ³Đ¼ĐμĐ½Ñ, Đ½ĐμĐ³¼Đ½Đ³¼Đ²Ñ,Đ¹ Ñ,,ÑfĐ°Ñ•Đ,Ñ• 50 Đ³Ñ€
260Đ ÑfĐ±**

Đ-Đ,Đ¹Đ°Đ°Ñ• Đ´Đ,Ñ•Đ¿ĐμÑ€Ñ•Đ,Ñ• [\[ĐŸĐ³¼Đ´Ñ€Đ³¼Đ±Đ½ĐμĐμ...\]](#)



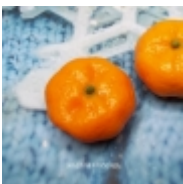
**Đ¡Đ,Đ»Đ,Đ°Đ³¼Đ½Đ³¼Đ²Đ°Ñ• Ñ,,Đ³¼Ñ€Đ¼Đ° Đ•Ñ•Ñ•Đ³¼Ñ€Ñ,Đ, Đ´Đ°Ñ€Đ,Đ°Đ, 3Đ”
650Đ ÑfĐ±**

Đ´Ñ,,Đ³¼Ñ€Đ¼Đμ 6 Ñ´Đ°Ñ€Đ,Đ°Đ³¼Đ² Ñ€Đ°Đ•Đ½Đ³¼Đ³Đ³¼ Đ´Đ,Đ°Đ¼ĐμÑ,Ñ€Đ°
[\[ĐŸĐ³¼Đ´Ñ€Đ³¼Đ±Đ½ĐμĐμ...\]](#)



**Đ¡Đ,Đ»Đ,Đ°Đ³¼Đ½Đ³¼Đ²Đ°Ñ• Ñ,,Đ³¼Ñ€Đ¼Đ° Đ•Đ»Đ³¼Ñ‡Đ°Đ° 3Đ” â,,-1
750Đ ÑfĐ±**

[\[ĐŸĐ³¼Đ´Ñ€Đ³¼Đ±Đ½ĐμĐμ...\]](#)



**Đ¡Đ,Đ»Đ,Đ°Đ³¼Đ½Đ³¼Đ²Đ°Ñ• Ñ,,Đ³¼Ñ€Đ¼Đ° ĐœĐ°Đ½Đ°Đ´Ñ€Đ,Đ½ ĐœĐ°Ñ€Đ³¼Đ°Đ°Đ³¼ Đ¼Đ°Đ»Ñ(Đ¹
540Đ ÑfĐ±**

[\[ĐŸĐ³¼Đ´Ñ€Đ³¼Đ±Đ½ĐμĐμ...\]](#)



Đ₁Đ₃Đ»Đ₃Đ°Đ^{3/4}Đ^{1/2}Đ^{3/4}Đ²Đ°Ñ• Ñ,,Đ^{3/4}Ñ€Đ^{1/4}Đ° ĐœĐ°Đ^{1/2}Đ´Đ°Ñ€Đ₃Đ^{1/2}
 ĐœĐ°Ñ€Đ^{3/4}Đ°Đ°Đ^{3/4} â,,-1
 580Đ ÑfĐ±

[\[ĐŸĐ^{3/4}Đ´Ñ€Đ^{3/4}Đ±Đ^{1/2}ĐµĐµ...\]](#)



Đ₁Đ₃Đ»Đ₃Đ°Đ^{3/4}Đ^{1/2}Đ^{3/4}Đ²Đ°Ñ• Ñ,,Đ^{3/4}Ñ€Đ^{1/4}Đ° Đ•Đ°Đ±Đ^{3/4}Ñ€
 Đ^{1/4}Đ°Đ^{1/2}Đ´Đ°Ñ€Đ₃Đ^{1/2} ĐœĐ°Ñ€Đ^{3/4}Đ°Đ°Đ^{3/4} 2 Ñ~Ñ,,
 850Đ ÑfĐ±

Đ' Đ^{1/2}Đ°Đ±Đ^{3/4}Ñ€Đµ Đ´Đ²Đ° Đ^{1/4}Đ°Đ^{1/2}Đ´Đ°Ñ€Đ₃Đ^{1/2}Đ° [\[ĐŸĐ^{3/4}Đ´Ñ€Đ^{3/4}Đ±Đ^{1/2}ĐµĐµ...\]](#)



Đ₁Đ₃Đ»Đ₃Đ°Đ^{3/4}Đ^{1/2}Đ^{3/4}Đ²Đ°Ñ• Ñ,,Đ^{3/4}Ñ€Đ^{1/4}Đ° Đ´Đ°Ñ€Đ₃Đ°Đ₃ 3Đ" Đ^{1/2}Đ°
 Đ²Ñ•Đ±Đ^{3/4}Ñ€(Ñ•)
 630Đ ÑfĐ±

Đ₁Đ^{3/4}Đ•Đ´Đ°Đ^{1/2}Đ° Đ¿Đ^{3/4} Đ•Đ°Đ°Đ°Đ•Ñf ĐœÑ•Đ»Đ^{3/4}Đ²Đ°Ñ€Đ^{1/2}Đ^{1/2}.Ñ€Ñ,, Đ"Đ»Ñ• Đ²Ñ•Đ±Đ^{3/4}Ñ€Đ°
 Ñ,,Đ^{3/4}Ñ€Đ^{1/4}Ñ• Đ²Đ^{3/4}Đ¹Đ´Đ₃Ñ,Đµ Đ² Đ^{3/4}Đ¿Đ₃Ñ•Đ°Đ^{1/2}Đ₃Đµ Ñ,Đ^{3/4}Đ²Đ°Ñ€Đ° [\[ĐŸĐ^{3/4}Đ´Ñ€Đ^{3/4}Đ±Đ^{1/2}ĐµĐµ...\]](#)



Đ₁Đ₃Đ»Đ₃Đ°Đ^{3/4}Đ^{1/2}Đ^{3/4}Đ²Đ°Ñ• Ñ,,Đ^{3/4}Ñ€Đ^{1/4}Đ° Đ´Đ₃Ñ´Đ°Đ° Đ^{1/4}Đ₃Đ^{1/2}Đ₃ (Ñ•)
 3Đ"
 590Đ ÑfĐ±

[\[ĐŸĐ^{3/4}Đ´Ñ€Đ^{3/4}Đ±Đ^{1/2}ĐµĐµ...\]](#)

- « « Đ' Đ^{1/2}Đ°Ñ‡Đ°Đ»Đ^{3/4}
- « ĐŸÑ€ĐµĐ´Ñ•Đ´ÑfÑ%Đ°Ñ•
- 1
- Đ₁Đ»ĐµĐ´ÑfÑŽÑ%Đ°Ñ• »
- Đ' Đ°Đ^{3/4}Đ^{1/2}ĐµÑ‡ » »

Đ ĐµĐ•ÑfĐ»ÑœÑ,Đ°Ñ,Ñ< 1 - 17 Đ₃Đ• 17